

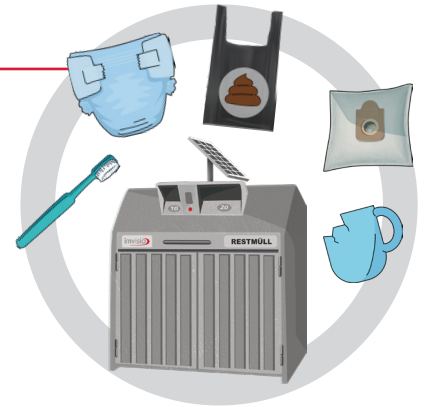
INFORMATION ON WASTE SEPARATION

For local particularities, please enquire directly with your local waste disposal company.



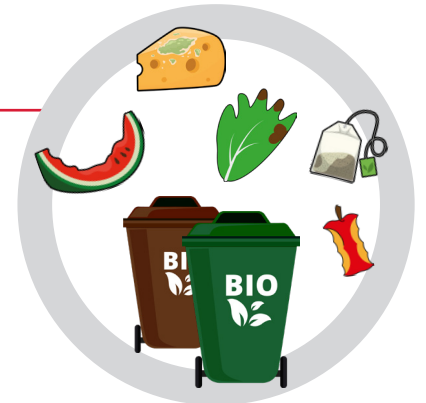
RESIDUAL WASTE (WASTE LOCK)

- Nappies, used hygiene articles such as sanitary pads, cotton wool pads, toothbrushes, masks
- Dust, vacuum cleaner bags, ashes, cigarette butts, candle stumps
- Soiled towels, sponges and cleaning cloths
- Soiled paper, tissues, baking paper and leftover wallpaper
- Ceramic, porcelain and drinking glass
- Medications, syringes and dressing material
- Dog and cat faeces
- Felt-tipped pens, fabric remnants, old clothing, leather and rubber
- Incandescent bulbs (no energy-saving bulbs)



ORGANIC WASTE (BROWN BIN / GREEN BIN)

- Food waste and food such as egg shells and fruit and vegetable skins
- Coffee grounds, filter bags, tea bags
- Spoiled food without the packaging
- Organic litter, such as straw and wood chippings, for small animals
- Leaves and potted plants without the pots
- Flower, shrub, tree and lawn cuttings
- Hair and feathers



In the event that no bin for organic waste is available, dispose of the organic waste with the residual waste (waste lock).

SALES PACKAGING (YELLOW BIN / YELLOW SACK)

Packaging made of plastic, metal and composites:

- Tins such as for vegetables, fish, soup, dog and cat food
- Food packaging for cheese, sausages, meat, yoghurt
- Foils for vegetables, fruit, baked goods and crisps
- Empty spray cans such as for deodorants, hair spray and room scent
- Containers for shampoo, toothpaste, cleaning agents and detergents
- Plastic bags and plastic nets, foils
- Foil-reinforced cardboard such as that used in milk and juice cartons
- Crown caps, screw caps and aluminium trays



PAPER / CARDBOARD / CARDBOARD BOXES (BLUE BIN)

- Packaging such as egg cartons and frozen pizza boxes
- Paper packaging for fruit and vegetables
- Books, newspapers, leaflets, catalogues, envelopes
- Shipping boxes and all cardboard boxes
- Scraps of paper, uncoated gift wrapping



USED GLASS (BOTTLE BANK)

- Bottles and screw-top jars
- Caution: no ceramic, no porcelain and no window glass



BULKY WASTE

- Large plastic and household items
- Furniture

